

proove
product with love

PROOVE ADVANTAGES

+ Uniqueness is more than price

For five years, the company has been researching the market to create the perfect formula of effective properties and optimal cost for each product category.

+ Exceptional design

In the process of product development, the company pays special attention to design, using premium materials and a creative approach. This gives the products an attractive, elegant and modern look.

+ Guarantee

Thanks to the reliable work of the quality control department, we provide favorable warranty obligations for our products.

+ Two-factor product inspection

The products undergo an initial check at the factory and an additional check at the warehouse by employees before shipment, which reduces the likelihood of defects to 0.3%.

+ Supply efficiency

Partnering with top global factories ensures high-quality, functional gadgets and accessories, while stock availability in China and Poland enables fast delivery and business scaling.

+ Personal control

Effective mechanisms ensure compliance with recommended retail prices and feedback processing, while a full electronics and accessories portfolio from one manufacturer minimizes logistics and operational costs.

+ Marketing support

Provision of all product materials: videos and photos of the product, as well as advertising layout for posters and banners.

+ Operational assistance

The company is personally involved in the development of its clients' brands, providing all the necessary services quickly and efficiently, adhering to its own concept of a partner-friendly in all aspects of support.



PROOVE HISTORY

2 0 2 0

- Creation of the Proove brand concept
- Launch of sales of the first Proove products - electric scooters

2 0 2 1

- Expanded into electric mobility solutions and plotters
- Refined manufacturing processes.
- Improving product quality through research and innovation

2 0 2 2

- Introduced new product categories to expand market reach
- Strengthened brand presence through strategic growth
- Improved durability and functionality with advanced technologies.

2 0 2 3

- Launch of the Proove range
- Formation of 3 categories and the first 150 SKU
- A ready-made product line of about 350 SKU

2 0 2 4

- Establishment of a sales department and warehouse in China
- Participation in two exhibitions in Hong Kong and Germany
- Release of the Proove Gaming sub-brand
- More than 650 SKU, 8 product categories

2 0 2 5

- Participation in 9 international exhibitions
- Expansion to 1500+ SKU and 11 product categories
- Development and promotion of the Proove Gaming sub-brand

PROOVE TECHNOLOGIES



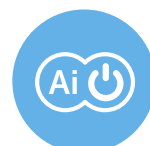
GaN technology

GaN enables chargers to deliver stable performance with reduced size and minimal heat. This technology allows you to charge modern devices faster and more efficiently, while maintaining their durability.



Qi2 technology

This is a new standard in wireless charging designed for even greater convenience and efficiency. It ensures precise magnetic alignment between the device and the charging station, which minimizes energy loss and increases charging speed.



AI Power technology

AI Power technology optimizes the charging process for the fastest and safest charging experience. It automatically adapts to the needs of each gadget, adjusting power to protect the battery and extend its life.



Surround Sound 7.1

The technology uses seven channels of spatial sound and one subwoofer to create a realistic sound stage. This allows you to clearly identify the direction of each sound, which is ideal for games, movies, and music.



Hot Swap

This is a revolutionary feature that gives users the freedom to swap switches on the keyboard without any special tools or technical knowledge. Hot Swap provides simplicity, convenience, and unlimited customization options.



Armrest 8D

This is an advanced armrest technology that has eight directions of adjustment: height, depth, vertical forward tilt, vertical backward tilt, rotation around the armrest axis, rotation around the mechanism axis clockwise, rotation around the mechanism axis counterclockwise, and overhang.



3D mode

This is a technology that simulates three-dimensional space and provides surround sound, creating a realistic sound stage. This allows the user to feel exactly where the sound is coming from, such as movie effects or details in music.



Headphones Game Mode

Game Mode in headphones is a mode that provides the best sound quality for gamers. It minimizes audio latency, allowing you to accurately synchronize the sound with the action on the screen. This allows players to hear the smallest sounds clearly.



ANC & ENC

ANC is an active noise cancellation technology that uses microphones and algorithms to detect external noise and eliminate it. ANC is ideal for activities in particularly noisy environments. ENC is a microphone noise cancellation technology that focuses on reducing background noise during calls.



Bass Boost Mode

This is a feature that enhances low frequencies when listening to audio. In this mode, the headphones or speakers adjust the sound profiles for more distinct and dynamic bass while maintaining overall sound quality.

MARKETING

SUPPORT

Comprehensive marketing support provides partners with all the necessary tools.

Digital materials:

- Providing access to Google Drive with basic marketing materials: photos, videos, banners, brand book.
- Providing access to logos, slogans, fonts, design systems, and ready-made templates for advertising campaigns.

POS materials:

- Providing high-quality image posters, stickers and souvenirs with the company's logo.
- Development of ready-made design layouts for outdoor advertising that partners can easily adapt.



MARKETING

SUPPORT

Comprehensive marketing support provides partners with all the necessary tools.



Merchandising and marketing interaction:

- Providing training materials on the principles of merchandising and other promotional activities.
- Assist partners in implementing effective advertising strategies.

Online presence:

- Posting information about partners on the company's website and social media.
- Increasing the visibility of partners through targeted digital campaigns and collaborations.

MARKETING

SUPPORT

Comprehensive marketing support provides partners with all the necessary tools.

Brand management and product training:

- Conducting training for partners on product functionality, characteristics and features.
- Providing consultations and methodological materials from brand managers to increase the expertise of partners.



PROOVE

Proove is an international brand of mobile accessories and gadgets for home and office.

Whose name combines two important concepts: the word **product** and the word **love**

prooveglobal.com

100+
factories

400+
employees

650+
SKU

5 years
of experience

p r o d u c t w i t h l o v e

PROOVE PRODUCTS



AUDIO



FOR CARS



FOR HOME



CASES



PROTECTIVE GLASS



FOR OFFICE



PROOVE PRODUCTS



CHARGERS



WIRELESS MAGNETIC CHARGERS



ELECTRIC SCOOTERS



POWER BANK



CABLES



SMART WATCH

GAMING PRODUCTS



GAMING KEYBOARDS



GAMING MICE



GAMING HEADSETS



GAMING SURFACES
FOR THE MOUSE



GAMEPADS



GAMING MICROPHONES



HUB



GAMING CHAIR

OFFICE IN CHINA

The office is located in Shenzhen, within the iconic SEG Plaza skyscraper, which is situated near the Huaqiangbei market. This strategic position not only places the company at the heart of one of the world's largest electronics hubs but also houses our MiniShop, providing easy access to the latest trends and innovations.





COMPANY'S STORE

Proove implements online and offline sales, which allows customers to familiarize themselves with the assortment and make a purchase in a convenient format, including in a physical store. This allows the company to provide customers with quick access to the products they need and personalized service.



THE COMPANY'S WAREHOUSE

The warehouse with an area of more than 2000 m² maintains a diverse stock of products and guarantees timely delivery of goods in proper condition. Thanks to modern equipment and a management system, Proove ensures the smooth functioning of logistics, controls every stage of storage and shipment, which allows it to meet the needs of partners and customers quickly and efficiently.



EXHIBITIONS

HONG KONG ELECTRONICS FAIR

Proove made its debut at the Hong Kong Electronics Fair Exhibition, capturing widespread attention within the tech industry. The event proved to be a milestone for the brand, attracting numerous new clients and solidifying its position in the market.



HONG KONG GLOBAL SOURCES

At the Global Sources Consumer Electronics Exhibition, Proove participated for the second time, showcasing one of the largest and most technologically advanced booths at the event. Proove's products were even featured on the official Global Sources platform, further amplifying the brand's presence and impact within the industry.

BERLIN IFA

In September 2024, Proove presented its latest lineup of mobile accessories and cutting-edge innovations in the Proove Gaming segment at the prestigious IFA Berlin. The exhibition served as a pivotal opportunity to strengthen partnerships with clients from across the globe, further establishing Proove's reputation for excellence and innovation.



[link](#)

Click on the link and go to the video and photo of the exhibitions

PARTNERS MAP

Africa:

- Ivory Coast
- Kenya
- Mali
- Morocco
- Nigeria
- Senegal

Asia:

- Afghanistan
- Armenia
- Azerbaijan
- Bangladesh
- China**
- Cyprus
- Georgia
- India
- Iran
- Iraq
- Israel
- Japan
- Jordan
- Kazakhstan**
- Kuwait
- Kyrgyzstan
- Lebanon
- Malaysia
- Mongolia**
- Nepal
- Pakistan
- Palestine
- Philippines
- Republic of Korea
- Saudi Arabia
- Singapore
- Taiwan
- Thailand
- Turkey
- Uzbekistan
- Vietnam**
- United Arab Emirates**

Europe:

- Austria
- Bulgaria
- Croatia
- Czech Republic
- Estonia**
- France
- Germany
- Iceland
- Ireland**
- Italy
- Latvia**
- Lithuania
- Moldova
- Montenegro
- Netherlands
- Poland**
- Portugal
- Romania
- Serbia
- Spain**
- Switzerland
- United Kingdom**
- Ukraine

North America:

- USA
- Canada

South America:

- Argentina
- Brazil
- Chile
- Ecuador
- Uruguay

Oceania:

- Australia



PARTNERS

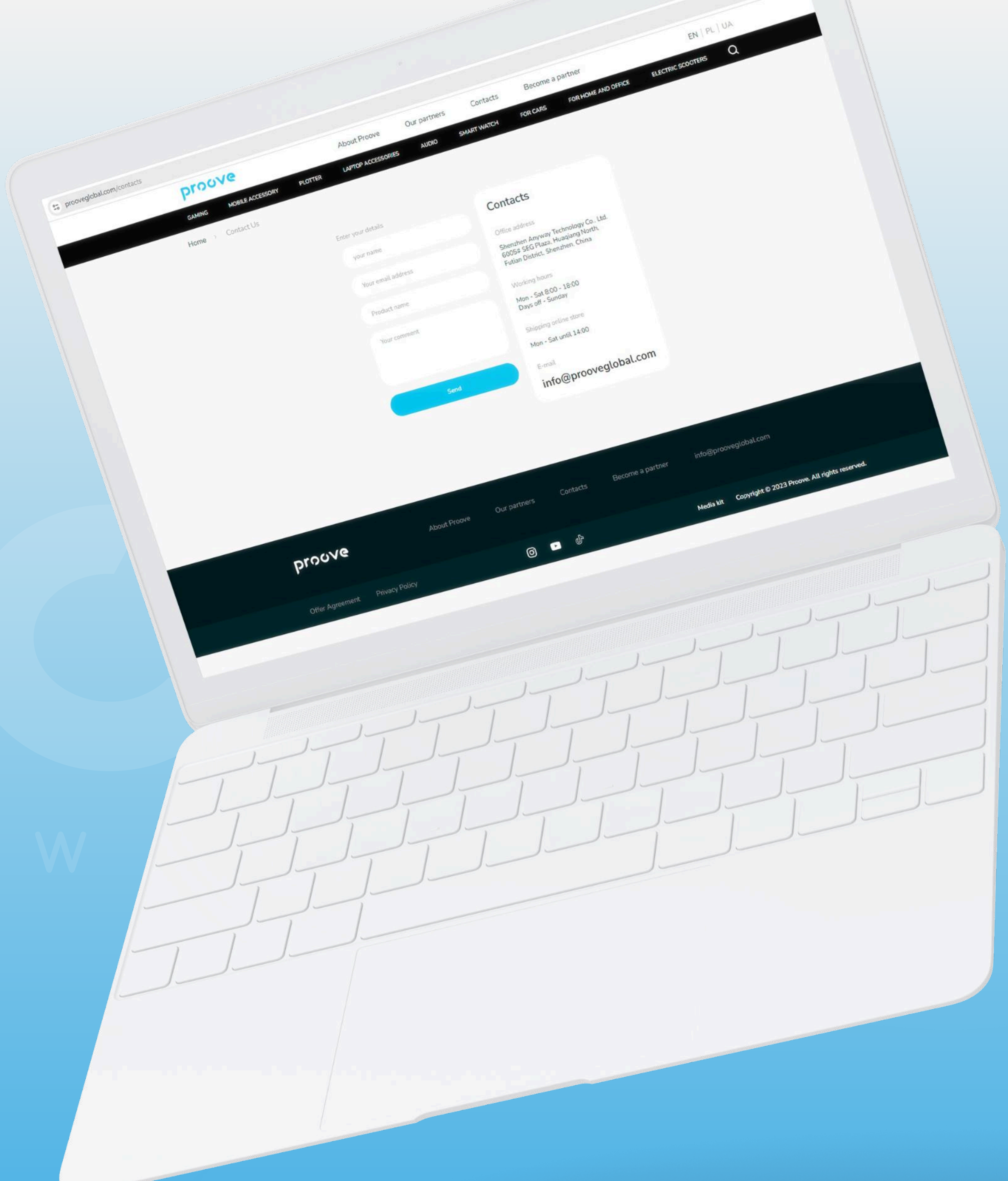




info@prooveglobal.com



Shenzhen Anyway Technology Co., Ltd.
6005# SEG Plaza, Huaqiang North, Futian District, Shenzhen, China
Designed by Proove. Made in China



Join Proove on site
and social media!

Proove
product w